

TACTACAM[™] SOLAR PANEL



INSTRUCTION **MANUAL**

TACTACAM.COM

INTRODUCTION

IMPORTANT SAFETY INSTRUCTIONS READ AND FOLLOW ALL INSTRUCTIONS SAVE THESE INSTRUCTIONS

Must charge this solar panel with the provided AC/DC adapter for a minimum of 4 hours before use.

Congratulations on your purchase of the TACTACAM Solar Panel. We truly value your business and will strive to provide you top quality customer service. Check out our other products on our website at www.tactacam.com

TACTACAM solar panel is a power supplier device with internal battery. The solar panel converts the sun's energy to electricity, which is then stored in the internal rechargeable battery. This solar panel is durable, waterproof, and easy to use.

The built-in high-capacity lithium Li-ion internal battery can be charged using solar light or the included AC/DC adapter.

TACTACAM solar panel is especially suitable for TACTACAM trail camera: REVEAL X, and REVEAL.

If you use this solar panel with devices other than the REVEAL X, REVEAL trail camera, please carefully check your product manual and contact your device supplier to ensure compatibility before connecting. TACTACAM assumes no responsibility for any damage that may happen with the improper operation of this product.

PACKAGE CONTENTS



- 1. Solar Panel
- 2. Adjustable Bracket
- 3. AC/DC Power Adapter

- 4. Mounting Strap
- 5. Output Cable

GENERAL FEATURES



- 1. Input
- 2. Indicators
- 3. Output

- 4. Mounting Hole
- 5. Button of Indicator

**The side that connects with power cable must face down, to prevent water damage in case of rain.*

GENERAL FEATURES

High-efficiency power supply: This solar panel is safe and reliable. It can power your device for a long time. At the same time, the solar panel can automatically convert light energy into electrical energy and stored it into the internal lithium battery day every day.

Safe and reliable: Designed with short-circuit protection, over-charge and over-discharge protection, protecting the battery and ensuring its long-term use and reliability.

Environmental protection, energy conservation: Use of green solar energy. Contributes to environmental protection.

Waterproof and durable: Waterproof design suitable for outdoor using.

Easy to use: Comes with adjustable easy-to-use mount, giving the panel a three-angle access to direct sunlight. Whenever and wherever you can; making it very convenient to charge your device.

Battery Indicator: Press button located on the back, and the white LED will light up for 5 seconds, 4 LED stands for 76%~100% power, 3 stands for 51% ~ 75% power, 2 stands for 26% ~ 50% power, 1 LED stands for 1~ 25%.

APPLICATIONS & SPECIFICATIONS

Remote metering applications where electricity is unavailable

Back-up power supply for uninterrupted operation for electronic devices.

SPECIFICATIONS

Electrical	Input voltage/current	9-12V/1A-2A
	Output voltage/current	12V/1.5A
	Built-in Lithium Polymer Battery	7.4V/3000mAh
	Solar panel	2.5W(11V / 230mAh)
	Solar energy conversion efficiency	>18%
	Power adapter	Input: 100-240V 50/60Hz
	Charging time	75h-120h(Using Solar Light) 3-5h(Using AC Adapter)
	Output Plug	5.5mm×2.1mm
Dimensions	Depth	22.7mm
	Width	126.7mm
	Height	182.7mm
	Weight	341g
	Mounting	Adjustable bracket
	Operating Temperature	4~+140°F/-20 ~+60°C
	Operation Humidity	5% ~ 95%

MOUNTING

1. Adjust the angle of the holder so that the solar panel is facing the sun directly, 30-degree, 60 degree and 90 degree adjustable. Generally, in the northern hemisphere, this means the panel is facing south. However, please note the ideal orientation depends on the specific situation of the set-up site.
2. Fix the solar panel into the bracket by using the wing nut in the package.
3. Tie the bracket and solar panel to the tree with the 1.7m strap.

NOTE: The side that connects with the power cable must be facing down, to prevent water damage in case of rain.

CONNECTING

Plug one side of power cable into the output socket (at the right side of solar panel), and then plug the other end into TACTACAM REVEAL or REVEAL X trail camera. If the inner lithium battery is charged, the camera will be immediately powered.

ATTENTION:

If the solar panel is connected to TACTACAM REVEAL series scouting cameras: it is strongly recommended that the batteries be installed inside the camera (even when connected with the solar charger), otherwise, the camera may stop operating due to power shortage (during intensive use of the camera, the solar charger may not be charged fast enough, and therefore is not ideal to be used alone without the batteries).

The solar panel is NEVER to be used in parallel connection with any other power sources, any damages resulted from this incorrect usage will not be covered by the warranties.

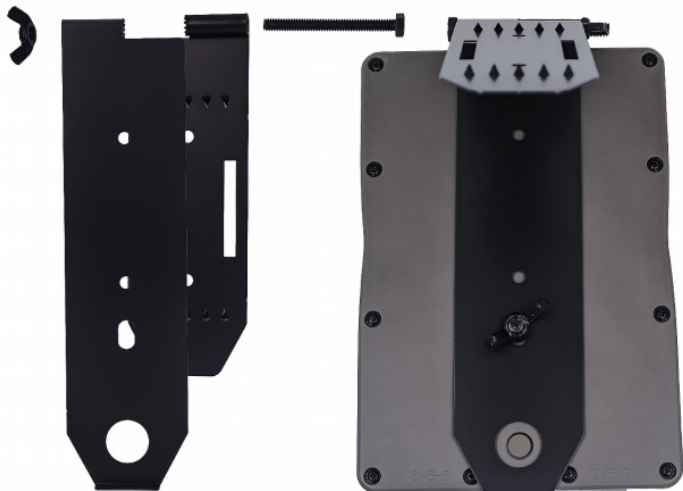
CHARGING

It is important to completely charge the solar panel before using. We strongly encourage you to charge 4-5 hours by adapter before using.

The solar panel can be charged by the solar light or a 12V output power adapter. The Charging Indicator will be lighted when it is charged. The white lights flashing means it's charging now, when four lights all turn to white, it means the solar panel charged fully.

NOTE: Please fully charge the battery at least one time every 3 months especially when no using it for long time.

ADJUSTABLE MOUNTING BRACKET ASSEMBLY



PRECAUTIONS

1. Do not scratch the surface of the solar panel with a sharp object.
2. Use the adapter in the package for charging. Please do not use low-quality charging adapter, or other adapter which does not match our solar panel, so as not to damage the product or other possible danger.
3. As a result of short-circuit protection, just unplug the short circuit load; and place it under the sun light for 10 seconds, it can resume normal operation, or use the AC adapter to charge and activate it.
4. Do not clean the solar panel with volatile liquids such as solvent, cleaning fluids or strong detergent. Use a soft cloth slightly moistened with water.
5. Do not drop the solar panel.
6. Do not attempt to disassemble or service the solar panel.
7. Do not open the solar panel for service. This could cause serious damage to the device and will void the warranty.
8. Do not expose the solar panel to extreme heat, such as leaving it on a car dashboard in hot weather.
9. Keep it away from fire.
10. Only use this device with the recommended power sources.
11. When not in use, please disconnect from power sources.

**DO NOT RETURN
THIS PRODUCT TO
YOUR RETAILER**

PLEASE CALL
218-282-5650

OR

EMAIL

SUPPORT@TACTACAM.COM

For any warranty issues or questions on how to
film your hunts with Tactacam.

110 N Sunset Blvd, Caledonia, MN 55921
www.tactacam.com



TACTACAM
SOLAR PANEL

110 N SUNSET BLVD, CALEDONIA, MN 55921
SUPPORT@TACTACAM.COM | 218-282-5650
WWW.TACTACAM.COM

© 2021 TACTACAM™