

**TACTACAM™**  
**REVEAL**  
CELLULAR CAMERA



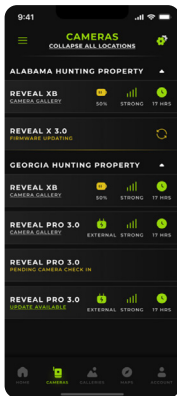
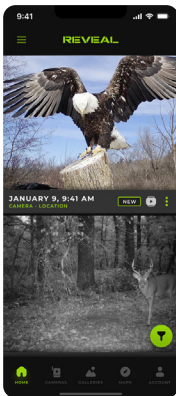
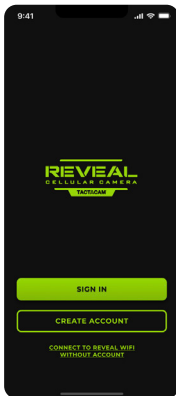
**INSTRUCTION MANUAL**

**TACTACAM.COM**

# REVEALS APP DOWNLOAD



DOWNLOAD THE  
REVEAL'S CELLULAR CAMERA APP  
VISIT YOUR APP STORE TO DOWNLOAD



# TABLE OF CONTENTS

<b>TABLE OF CONTENTS</b>	<b>3</b>
<b>INTRODUCTION</b>	<b>4</b>
What's in the Box	4
What You Will Need	4
<b>QUICK START</b>	<b>6</b>
Setting Up the Camera	6
Setting Up Your Account	7
Downloading the App	7
Add Camera to the App	8
Switching Cellular Networks	9
Pairing Your Camera to Your Phone Through WiFi	10
Remotely Change Camera Settings from the App	11
Sending a Test Picture	11
Leaving your Camera out in the Field	12
<b>SETTINGS &amp; SPECIFICATIONS</b>	<b>13</b>
<b>BEST PRACTICES</b>	<b>15</b>
Proper Camera Placement	15
Batteries and Cellular Trail Camera Performance	15
<b>TROUBLESHOOTING</b>	<b>16</b>
Camera Sends Pictures of Nothing	16
Night Vision Flash Range Doesn't Meet Expectations	16
Camera Stops Taking Images or Won't Take Images	17
Internal Condensation on Lens	17
Camera Accidentally Submerged in Water	17
<b>WARRANTY</b>	<b>18</b>

# INTRODUCTION

## WHAT IS IN THE BOX?

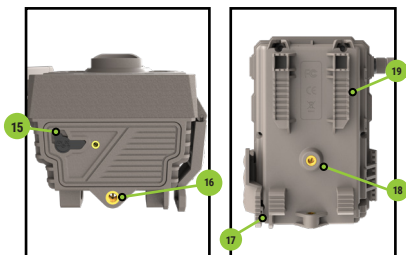
- (1) Trail Camera
- (1) Instruction Manual
- (1) Mounting Strap
- (1) Antenna
- (1) Quick Start Guide

## WHAT YOU WILL NEED

- Full-size SD Card - Class 10, U3, 32GB
- Recommended Brands: Tactacam, Lexar, SanDisk  
*(Other brands of low-end SD cards are incompatible and will yield unexpected results)*
- (12) AA batteries required - Lithium batteries recommended in colder temperatures

# INTRODUCTION

- 1 Lens
- 2 Antenna
- 3 IR LEDs
- 4 Camera Working Status Indicator
- 5 Device Status Indicator Light (Green/Blue)
- 6 SD Card Indicator (Red/Green)
- 7 Power Switch (ON/SETUP/OFF)
- 8 PIR Motion Sensor
- 9 WiFi Indicator Light (Blue)
- 10 Microphone
- 11 Battery Level Indicator
- 12 4G Signal Indicator
- 13 SD Card Slot
- 14 Test Button
- 15 External Battery In/DC Port
- 16 Tripod/Mount Attachment
- 17 Cable Lock Holes
- 18 1/4-20 Insert
- 19 Strap Holes



## SETTING UP THE CAMERA

1. Install camera's antenna.
  - Note: Do not over tighten the antenna, once it is secure stop tightening to prevent antenna port damage.
2. Install a Class 10 U3 SD card (16-32GB).
  - Recommended brands are: SanDisk, Lexar and Tactacam
3. Install 12 AA batteries.
  - To remove battery tray, open controls door, unlatch battery tray door, swing open, depress battery tray clip and pull out battery tray.
  - See battery details on page 15 under Best Practices.

## SETTING UP YOUR ACCOUNT

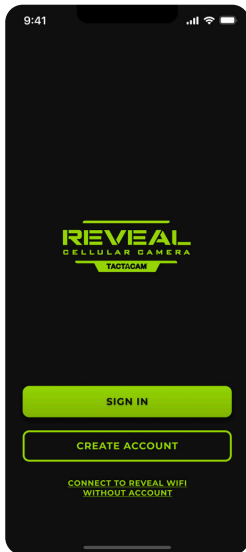
If this is your first Reveal's Cellular Camera that you are activating, please visit the Reveal's Cellular Camera Web Portal at

<https://Revealstrailcam.com> to set up your account.

If you already have a Reveal's Cellular Camera account with ACTIVE cameras, you can simply log in to your app and add your camera following the instructions on page 8.

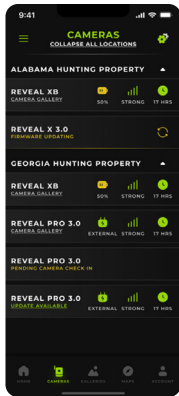
## DOWNLOADING THE APP

In your Apple or Google Play Store, download the **Reveal's Cellular Camera** app and sign in using the same email and password you created on the website (<https://Revealstrailcam.com>).



## ADD CAMERA TO THE APP

1. Navigate to the Reveal's Cellular Camera app on your device and login using your Reveal's Cellular Camera account credentials. Click the home icon.
2. Click ADD YOUR FIRST CAMERA.
3. Select the plan you wish to have.
4. Follow the in app prompts, allow access to the camera of your phone, and then scan the QR code on the camera.
5. Enable WiFi and Location Services.
6. Continue to WiFi.
7. Select Carrier to choose US CELLULAR or Select "Choose Other Network" to switch to Verizon, select "Continue".
10. Next, name your camera and assign a location.



## SWITCHING CELLULAR NETWORKS

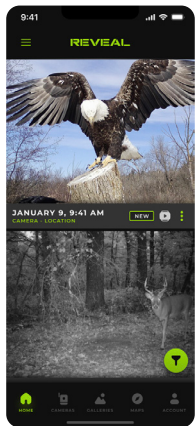
To manually swap cellular carriers on your Reveal's Cellular Camera, switch camera to Setup Mode:

1. In app from home feed select menu drop down.
2. Select Cameras
3. Select Camera you would like to change
4. Select Replace Camera
5. Click replace camera, type in REPLACE and click Replace Camera
6. Click "go to activation"
7. Follow steps on screen

## PAIRING YOUR CAMERA TO YOUR PHONE THROUGH WiFi

You can automatically change and apply the camera settings when your phone is connected to the camera's WiFi. **This will not work unless you are next to the camera.**

1. Turn your Reveal's Cellular Camera to SETUP mode.
  2. When the WiFi light is blinking blue, it is ready to pair to your phone or tablet.
  3. In the app go to the Account page and click Connect to Reveal's WiFi.
  4. Follow the in-app instructions and turn ALL slides to the ON position.
  5. See preview on screen
    - a. Red line on preview is point of focus
    - b. To send test picture, press "Test" button on camera
- Also available in the app while connected to WiFi:
- a. Instantly apply setting changes from the app
  - b. Formatting SD Card



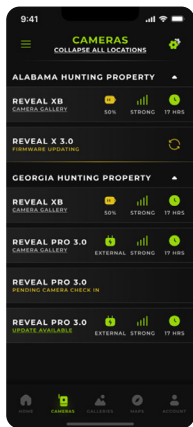
## REMOTELY CHANGE THE CAMERA SETTINGS FROM THE APP

From the camera page, select the box containing the camera name. Then choose “Camera Settings”. Make sure to select “Apply Settings” when done to save your changes.

**Note: In cameras SETTINGS > Settings Check, Daily will check settings every 24 hours. Instant will Receive settings Instantly but will consume more battery.**

## SENDING A TEST PICTURE

1. With camera in setup mode, allow the camera to connect to 4G signal. The LED signal indicator
  - After your camera is activated, you will see the signal status indicator searching, and then connect showing the signal strength.
  - After the camera has connected, push the test button to send a photograph.
  - You will see the status light blinking as the image is sending.
  - When the test picture sends successfully, the status light will turn green.
  - If the status light turns red there may have been an issue trying to send the test photo. This is usually caused by signal strength or the SD Card.



# START USING CAMERA

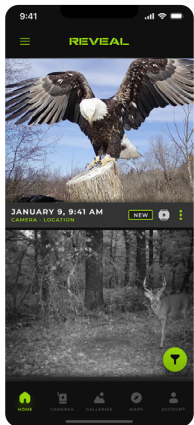
## SENDING A TEST PICTURE (CONTINUED)

light will be constant green.

2. Refer to the app to be sure the picture has successfully sent.
3. While your camera is connected to your phone with WiFi, you will be able to access a live preview to help with camera setup and proper placement.
4. Allow the camera to connect to 4G signal. The LED signal indicator light will be constant green.

## LEAVING YOUR CAMERA IN THE FIELD

1. While your camera is connected to your phone with WiFi, you will be able to access a live preview to help with camera setup and proper placement.
2. Ensure the antenna is securely tightened.
3. Wipe down the seal, removing any dirt and/or debris.
4. Turn the camera to the ON position.
5. As long as your phone picks up a signal, be sure a motion detected picture is sent to your phone via the app. This may take a few minutes.



## SETTINGS / SPECIFICATIONS

Camera Mode	Photo; Photo+Video
Day/Night Mode	Daytime: Color, Nighttime: B+W
IR Range	96+ Feet
PIR Angle	45*
Flash	Low-Glow IR Technology
Operating Keys (2)	Power switch; Test button
Lens	F=6mm; F/No=2.0; FOV=60* Auto IR-Cut-Remove (at night)
SD Card	Class 10, U3, 32GB, minimum 90MB/Sec
Status Indicator	1 LED
Picture Format	JPEG
Video	Optional
Trigger Speed	0.4 seconds
SD Card Loop	Optional
Operation Power	6.2-12V
Battery	X = 12xAA Cartridge - Barrel plug reducer size 4x1.7mm
External DC	12V-2A

## SETTINGS / SPECIFICATIONS

Transfer Picture via 4G	Thumbnail images sent to app (Additional data charges may apply)
Request HD Photo and Video via 4G	Only in supported locations (Additional data charges may apply)
Upload Frequency/Send Type	Timely, Once per day, Twice Per Day, 4 Times Per day
4G Communication	LTE wireless
4G Antenna	1 Antenna
Device Serial No.	Yes
Interface	LTE, USB, and SD Card
Mounting	Strap; Tripod (not included)
Operating Temperature	-25°C to 60°C -13F to 140°F
Operation Humidity	5% to 90%
Waterproof rating	IP66
Dimensions	3.62"x4.13"x5.47"
Weight	About 0.95lb
Certification	FCC RoHs

## PROPER CAMERA PLACEMENT

1. Location and placement is critical for optimal camera performance.
2. Avoid hanging the camera on small trees that are prone to moving with the wind.
3. Place the camera about waist high on the tree or post.
4. We recommend having the camera pointing down about 7 to 15 degrees. We recommend using shims to achieve the desired angle.
5. To achieve the best lighting conditions, face your camera north. Avoid facing your camera toward the sun.
6. If the camera is placed too high on a tree and angled down, the field of view "window" becomes narrower, this is only a good idea if you plan to set your camera to watch a bait station or scrape.
7. On a food plot:
  - Camera height and angle is critical to get the widest field of view. Do not place camera too high.
8. On a trail:
  - For the best view, place your camera at an angle looking up or down the trail rather than perpendicular to the trail.

## BATTERIES AND CELLULAR TRAIL CAMERA PERFORMANCE

1. Use the recommended batteries for the Reveal's Cellular Camera:
  - Energizer Ultimate Lithium
  - Duracell Max Alkaline batteries
  - Rayovac UltraPro Alkaline batteries

*\* Do not mix old and new batteries*

*\* Do not mix alkaline, lithium, standard, or rechargeable batteries*

*\* Ensure the batteries are installed correctly with the regard to polarity (+ and -).*

*\* Always remove batteries if consumed or if product is to be left unused for a long time.*
2. In cold weather, use lithium ion batteries for optimal camera speed and performance.
3. Expected picture count with the proper batteries (in greater than freezing temps) are:
  - Lithium: 4,000+ pictures
  - Alkaline: 2,500+ pictures
4. If connecting an External Solar Panel (sold separately), the internal batteries would act as a backup power source.

## CAMERA SENDS PICTURES OF NOTHING

**Motion sensors** (PIR sensors) are actually heat and motion sensors. This is why on a hot and windy day, people get false triggers. People and animals are not the only objects that will trigger your camera; vegetation and precipitation can act as a moving target as well.

1. Be sure to clear any low hanging tree branches, brush, and weeds from the field of view, 5-10 yards in front of the camera.
2. Motion sensitivity recommendations:
  - Set to High to start, and decrease sensitivity if you're getting too many false triggers. (9 being the highest and 1 being the lowest).

## NIGHT VISION FLASH RANGE DOESN'T MEET EXPECTATION

1. Check to make sure that batteries are fully charged.
2. "Max Range" offers better IR flash range. Given IR flash range values are based on max range setting; adjust Night Mode to Max Range for better night vision flash range.
3. High quality 1.2V NiMH rechargeable AA batteries can also offer improved IR flash range. Note: If your camera will be used in cold weather, we do recommend lithium batteries to deliver consistent results.
4. Certain surroundings (like trees, walls, ground, etc.) within flash range can deliver you better night time images. To improve night images, do not aim camera in an open field where there is nothing to reflect the IR flash back.

## **CAMERA STOPS TAKING IMAGES OR WON'T TAKE IMAGES**

1. Make sure that the SD card is not full. If the SD card is full, the camera will stop taking images. Users can turn on SD Loop to avoid such problems. This will cause the SD card to overwrite older images.
2. Make sure that alkaline or NiMH-AA batteries have enough power for the camera to work.
3. Format the SD card with the camera before using or when the camera stops taking images.

## **INTERNAL CONDENSATION ON LENS**

The Reveal's Cellular Camera is IP66 rated waterproof. This means the camera is water resistant against powerful jets. The only way the Reveal's Cellular Camera can get condensation in or behind the lens is if the antenna is not screwed in all the way, or if there is dirt or debris on the seal. Follow these at home instructions to alleviate this issue if need be:

- Pull the SD card out and let the camera sit for 3-4 days open, in an area where there is circulating air (fan or vent).
- You can also place in a sealed container with rice for 24 hours to draw out the moisture.
- Clean the seal well and tighten your antenna.
- Place back out in the field.

## **IF THE CAMERA HAS ACCIDENTALLY BEEN SUBMERGED IN WATER**

1. Do not open the camera right away.
2. Be sure to dry the outer housing of the camera, preventing water from entering the inside of the camera and causing internal damage.

## HOW LONG DOES THIS COVERAGE LAST?

1. One year from the date of purchase.

## WHAT IS COVERED?

1. This limited warranty covers manufacturer defects in materials and workmanship including but not limited to:
  - Defective buttons
  - Cracked/chipped glass lens
  - Broken SD card or SIM card spring mechanism
  - Broken USB port
2. Covered cameras will either be repaired by a certified camera technician, or replaced.

## WHAT IS NOT COVERED?

1. This limited warranty does not cover any damage caused by the owner modifying, attempting to fix, or otherwise altering the product.
2. This limited warranty excludes damage caused by people or animals, including but not limited to: antenna, strap, Fresnel lens, glass lens, or camera housing.
  - If damage is caused to the camera by the owner or animal, contact customer support for repair options to retain warranty coverage.

**Federal Communications Commission - Part 15**

This equipment has been tested and found to comply with the limits for a Class B digital device, pursuant to Part 15 of the Federal Communications Commission rules. These limits are designed to provide reasonable protection against harmful interference in a residential installation. This equipment generates, uses and can radiate radio frequency energy and, if not installed and used in accordance with the instructions, may cause harmful interference to radio communications. However, there is no guarantee that interference will not occur in a particular installation. If this equipment does cause harmful interference to radio or television reception, which can be determined by turning the equipment off and on, the user is encouraged to try to correct the interference by one or more of the following measures:

- Reorient or relocate the receiving antenna.
- Increase the separation between the equipment and receiver.
- Connect the equipment into an outlet on a circuit different from that to which the receiver is connected.
- Consult the dealer or an experienced radio/TV technician for help.

Changes or modifications to this equipment not expressly approved by the party responsible for compliance could void the user's authority to operate the equipment. This device complies with Part 15 of the FCC rules. Operation is subject to the following two conditions: (1) this device may not cause harmful interference, and (2) this device must accept any interference received, including interference that may cause undesired operation.



TACTACAM, 1668 JORDAN WEST RD, DECORAH, IA 52101  
SUPPORT@TACTACAM.COM | 218-282-5650  
WWW.TACTACAM.COM

© 2024 REVEAL CELLULAR CAMERA BY TACTACAM™